

AA4000™ Air Assisted Airless HVLP Spray Gun

BINKS®
A54-68R 8/03

*An exceptionally
fine finish with
reduced overspray
and VOC emissions.*



A fine finish with reduced overspray and VOC emissions.

The unique tip and air cap design of the Binks AA4000 Air Assisted Airless HVLP Spray Gun allows operators to use lower fluid and air pressure than the competition to achieve an exceptionally fine finish.

HVLP means:

- Better transfer efficiency
- A softer spray pattern
- Less bounceback
- Lower booth maintenance costs
- Less overspray contaminating other parts
- Longer life on wear parts

Specifications

Maximum Fluid Pressure:
4000 psi/275 bar

Maximum Air Pressure:
100 psi/6.8 bar

Specifications (con't)

Gun Body: Forged Aluminum

Fluid Path: Stainless Steel

Fluid Shut Off Type:
Tungsten Carbide Seat
(UHMW Seat Optional)

Fluid Inlet Size: 1/4" NPS(m) Thread

Air Inlet Size: 1/8" NPT(m)
x 1/4" NPS(m) D.M. Nipple

Gun Weight: 16 oz./500 g

Part Sheet: 77-2776

Simple design, parts changeouts in 3-5 minutes.

- Only 20 replaceable parts
- Component cartridge design for quick and easy repairs
- No special tools needed for repairs
- Low replacement costs on main wear parts (tips, needle/packing cartridge, seats, and air caps)

Ergonomic design reduces operator fatigue.

The design of the Binks AA4000 reduces operator fatigue which increases production rates, improves finish quality, and improves efficiency while reducing the risk of painful and costly CTD's (Cumulative Trauma Disorders).

- Handle designed to fit comfortably in the hand
- Weighs 22% less than closest competitor (16 oz. vs. 20.4 oz.)
- Trigger Span/distance for full trigger pull is 33% less than closest competitor (.4" vs. .6")

How to Order the AA4000 Spray Gun

To order a AA4000 Spray Gun less tip, order part number 4000 - 0000 - 4

To order a AA4000 Spray Gun with tip, order part number 4000 - 2716 - 4

For additional tips, order by part number 113 - 02714

See spray tip selection chart for orifice size and fan size required

AA4000™ Air Assisted Airless Spray Gun

Accessories

Hoses

PART #	DESCRIPTION
71-4990	15' Poly Air Tubing 3/8" O.D., 1/4" I.D. w/Fittings
71-4991	25' Poly Air Tubing 3/8" O.D., 1/4" I.D. w/Fittings
71-8087	15' 3/16" High Pressure Fluid Hose Assembly
71-8088	25' 3/16" High Pressure Fluid Hose Assembly

Fittings

PART #	DESCRIPTION
54-4975	1/8" NPT(m) x 3/8" O.D. Push-In Tube Fitting, std.
54-4976	1/4" NPT(f) x 3/8" O.D. Push-In Tube Fitting, opt.

Fluid Seat

PART #	DESCRIPTION
54-4960	Standard Tungsten Carbide Fluid Seat
54-4926	Optional UHMW Fluid Seat

Fluid Filter

PART #	DESCRIPTION
54-3655	100 Mesh Gun Mounted Filter, 5800 PSI working pressure
54-5010	100 Mesh Gun Mounted Filter, 4000 PSI working pressure
54-4725	100 Mesh Gun Mounted Edge Filter, 4000 PSI working pressure

Airless Spray Tip – Fluid Flow Rate*

ORIFICE SIZE (INCHES)	500 PSI OZ./MIN.	1000 PSI OZ./MIN.	1500 PSI OZ./MIN.	2000 PSI OZ./MIN.	2500 PSI OZ./MIN.	3000 PSI OZ./MIN.	3500 PSI OZ./MIN.	4000 PSI OZ./MIN.
VERY THIN – Wash Primers, Dyes, Stains, Solvents, Water, Inks								
.009	5.1	7.1	8.2	9.5	10.6	12.2	13.6	14.5
THIN – Sealers, Lacquers, Primers, Ink, Zinc Chromate, Acrylics								
.015	16.5	23.3	27.8	36.1	38.2	41.7	44.1	49.4
MEDIUM – Lacquers, Synthetics, Enamels, Varnishes, Shellacs								
.021	32.8	45.8	56.8	67.2	76.6	82.8	89.6	98.0
.024	39.7	56.1	68.7	79.3	88.7	97.1	104.9	112.2
.027	50.4	71.2	87.2	100.7	112.6	123.4	133.2	142.4

Flow rate of fluid materials through spray tip, oz./min.

Fluid Regulator

PART #	DESCRIPTION
845011	Less Gauge, 1000 to 3000 PSI regulated range
845013	Less Gauge, 2000 to 5000 PSI regulated range

Repair & Cleaning Kits

PART #	DESCRIPTION
54-4993	Replacement Parts Kit: includes fluid seat, O-ring, front head gasket, needle/packing cartridge, fluid inlet nut, and air valve assembly
54-4994	Cleaning Kit: includes one standard stiff nylon pipe cleaning brush, full-size nylon brush, tip cleaner, and Binks Gunners Mate Lubricant

Test Gauges

PART #	DESCRIPTION
54-4997	HVLP Test Gauge AA2
54-5022	HVLP Test Gauge AA4

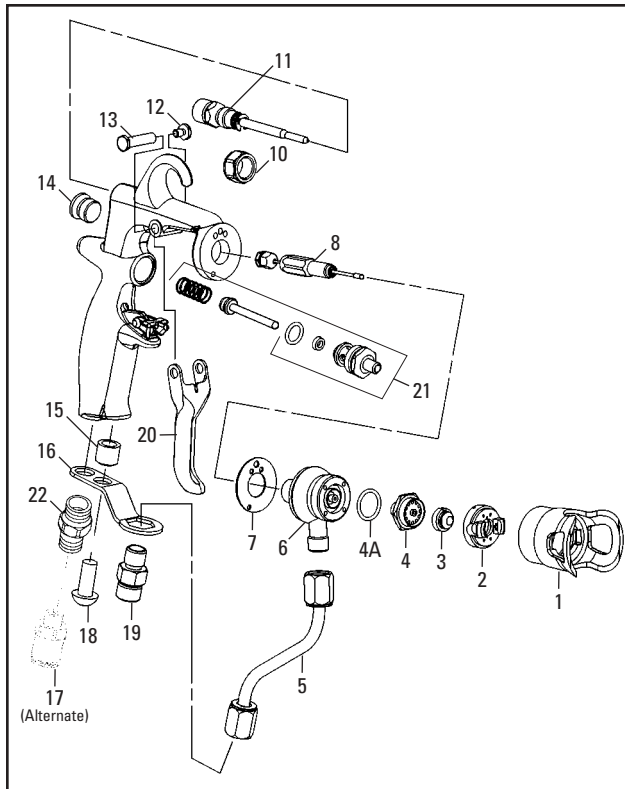
Air Caps

PART #	DESCRIPTION
AA-2 - 54-4980	Thin to Medium Materials
AA-4 - 54-4978	Medium to Heavy Materials

Spray Tip Selection Charts

PART #	SIZE	FAN WIDTH♦	PART #	SIZE	FAN WIDTH♦
113-00902	.009	1" – 2"	113-01906	.019	4" – 6"
113-00904	.009	2" – 4"	113-01908	.019	6" – 8"
113-00906	.009	4" – 6"	113-01910	.019	8" – 10"
113-00908	.009	6" – 8"	113-01912	.019	10" – 12"
113-00910	.009	8" – 10"	113-01914	.019	12" – 14"
113-00912	.009	10" – 12"	113-01916	.019	14" – 16"
113-01104	.011	2" – 4"	113-01918	.019	16" – 18"
113-01106	.011	4" – 6"	113-02110	.021	8" – 10"
113-01108	.011	6" – 8"	113-02112	.021	10" – 12"
113-01110	.011	8" – 10"	113-02114	.021	12" – 14"
113-01112	.011	10" – 12"	113-02116	.021	14" – 16"
113-01114	.011	12" – 14"	113-02118	.021	16" – 18"
113-01304	.013	2" – 4"	113-02410	.024	8" – 10"
113-01306	.013	4" – 6"	113-02412	.024	10" – 12"
113-01308	.013	6" – 8"	113-02414	.024	12" – 14"
113-01310	.013	8" – 10"	113-02416	.024	14" – 16"
113-01312	.013	10" – 12"	113-02418	.024	16" – 18"
113-01314	.013	12" – 14"	113-02710	.027	8" – 10"
113-01506	.015	4" – 6"	113-02712	.027	10" – 12"
113-01508	.015	6" – 8"	113-02714	.027	12" – 14"
113-01510	.015	8" – 10"	113-02716	.027	14" – 16"
113-01512	.015	10" – 12"	113-02718	.027	16" – 18"
113-01514	.015	12" – 14"			
113-01516	.015	14" – 16"			
113-01518	.015	16" – 18"			
113-01706	.017	4" – 6"			
113-01708	.017	6" – 8"			
113-01710	.017	8" – 10"			
113-01712	.017	10" – 12"			
113-01714	.017	12" – 14"			
113-01716	.017	14" – 16"			
113-01718	.017	16" – 18"			

♦ Based on 4000 PSI with water. Actual results may vary, depending on material viscosity.



Parts List

When ordering, please specify Part No.

ITEM NO.	PART NO.	DESCRIPTION	QTY.
1	54-4983	Tip Guard Assembly	1
2	54-4978	AA4 Air Cap (Standard)	1
	54-4980	AA2 Air Cap (Optional)	1
3	113-0XXXX	Carbide Tip Assembly (See Tip Selection Chart)	1
4	54-4960	Fluid Seat (Tungsten Carbide Standard or UHMW Optional, 54-4926)	1
4A	20-6037	O-Ring	1
5	54-4906	Fluid Tube Assembly	1
6	54-4986	Gun Head	1
7	54-4923	Front Head Gasket	1
8	54-4963	Needle Packing Cartridge (4,000 PSI Maximum)	1
10	54-4925	Fluid Inlet Nut	1
11	54-4977	Fan Control Assembly	1
12	54-4939	Trigger Screw	1
13	54-4938	Trigger stud	1
15	54-4947	Fluid Tube Bracket Spacer	1
16	54-4943	Fluid Tube Bracket	1
17	54-4975▲	Push In Tube Fitting 1/8" NPT(m) x 3/8" O.D.	1
18	20-6718	Button Head Cap Screw	1
19	54-4944	Fluid Inlet Fitting	1
20	54-4937	Trigger	1
21	54-4909	Air Valve Assembly	1
22	71-28	D.M. Nipple 1/8" NPT(m) x 1/4" NPS(m)	1

▲ Available as part of Repair Kit 54-4993. ▲ Alternate Push-In Tube Fitting (17) is included in gun package.
♦ Also available: 20-6037-K10 (Kit of 10 O-rings).