

# AA1500™ Air Assisted Airless Spray Gun

**BINKS®**  
A54-67R 8/03

*Higher transfer efficiency for today's highest quality finishing.*



*Patent Pending*

## ***A superior finish with reduced overspray and VOC emissions.***

The unique tip and air cap design of the Binks AA1500 Air Assisted Airless Spray Gun allows operators to use lower fluid and air pressure than the competition to achieve a superior finish.

This means:

- Better transfer efficiency
- A softer spray pattern
- Less bounceback
- Lower booth maintenance costs
- Less overspray contaminating other parts
- Longer life on wear parts

## ***Specifications***

Maximum Fluid Pressure:  
1500 psi/105 bar

Maximum Air Pressure:  
100 psi/6.8 bar

## ***Specifications (con't)***

Gun Body: Forged Aluminum

Fluid Path: Stainless Steel

Fluid Shut Off Type:  
Standard UHMW Seat or  
Optional Tungsten Carbide

Fluid Inlet Size: 1/4" NPS(m) Thread

Air Inlet Size: 1/8" NPT(m) x 3/8" O.D.  
Push-In Tube Fitting or D.M. Nipple

Gun Weight: 16 oz./500 g

Part Sheet: 77-2767

## ***Simple design, parts changeouts in 3-5 minutes.***

- Only 20 replaceable parts
- Component cartridge design for quick and easy repairs
- No special tools needed for repairs
- Low replacement costs on main wear parts (tips, needle/packing cartridge, seats, and air caps)

## ***Ergonomic design reduces operator fatigue.***

The design of the Binks AA1500 reduces operator fatigue which increases production rates, improves finish quality, and improves efficiency while reducing the risk of painful and costly CTD's (Cumulative Trauma Disorders).

- Handle designed to fit comfortably in the hand
- Weighs 22% less than closest competitor (16 oz. vs. 20.4 oz.)
- Trigger Pull Tension is 22% lighter than closest competitor (3.2 lbs. vs. 4.1 lbs.)
- Trigger Span/distance for full trigger pull is 33% less than closest competitor (.4" vs. .6")

# AA1500™ Air Assisted Airless Spray Gun

## Accessories

### Hoses

PART #	DESCRIPTION
71-4990	15' Poly Air Tubing 3/8" O.D., 1/4" I.D. w/Fittings
71-4991	25' Poly Air Tubing 3/8" O.D., 1/4" I.D. w/Fittings
71-4992	15' 1/8" High Pressure Fluid Hose Assembly
71-4993	25' 1/8" High Pressure Fluid Hose Assembly
71-4995	25' 3/16" High Pressure Fluid Hose Assembly

### Fittings

PART #	DESCRIPTION
54-4975	1/8" NPT(m) x 3/8" O.D. Push-In Tube Fitting, std.
54-4976	1/4" NPT(f) x 3/8" O.D. Push-In Tube Fitting, opt.
71-28	D.M. Nipple 1/8" NPT(m) x 1/4" NPS(m), alternate

### Fluid Seat

PART #	DESCRIPTION
54-4926	Standard UHMW Fluid Seat
54-4960	Optional Tungsten Carbide Fluid Seat

### Fluid Filter

PART #	DESCRIPTION
54-3655	100 Mesh Gun Mounted Filter, 5800 PSI working pressure
54-5010	100 Mesh Gun Mounted Filter, 4000 PSI working pressure
54-4725	100 Mesh Gun Mounted Edge Filter, 4000 PSI working pressure

### Fluid Regulator

PART #	DESCRIPTION
845001	Med. Pressure, Regulator with Gauge, 6 gpm 100 to 800 regular range
845010	Med. Pressure, Regulator without Gauge, 3 gpm 400 to 1250 regular range

## Repair & Cleaning Kits

PART #	DESCRIPTION
54-4970	Replacement Parts Kit: includes fluid seat, O-ring, front head gasket, needle/packing cartridge, fluid inlet nut, and air valve assembly
54-4994	Cleaning Kit: includes one standard stiff nylon pipe cleaning brush, full-size nylon brush, tip cleaner, and Binks Gunners Mate Lubricant

## Test Gauges

PART #	DESCRIPTION
54-4997	HVLP Test Gauge AA2
54-5022	HVLP Test Gauge AA4

## Air Caps

PART #	DESCRIPTION
AA-2 - 54-4980	Thin to Medium Materials
AA-4 - 54-4978	Medium to Heavy Materials

## How to Order the AA1500 Spray Gun

To order a AA1500 Spray Gun less tip, order part number 1500 - 0000 - 2

To order a AA1500 Spray Gun with tip, order part number 1500 - 2716 - 2

For additional tips, order by part number 113 - 02714

See spray tip selection chart for orifice size and fan size required

## Airless Spray Tip - Fluid Flow Rate\*

ORIFICE SIZE (INCHES)	500 PSI OZ./MIN.	1000 PSI OZ./MIN.	1500 PSI OZ./MIN.
VERY THIN - Wash Primers, Dyes, Stains, Solvents			
.009	5.1	7.1	8.2
THIN - Sealers, Lacquers, Primers, Ink, Zinc Chromate			
.015	16.5	23.3	27.8
MEDIUM - Lacquers, Synthetics, Enamels, Varnishes			
.021	32.8	45.8	56.8
.024	39.7	56.1	68.7
.027	50.4	71.2	87.2

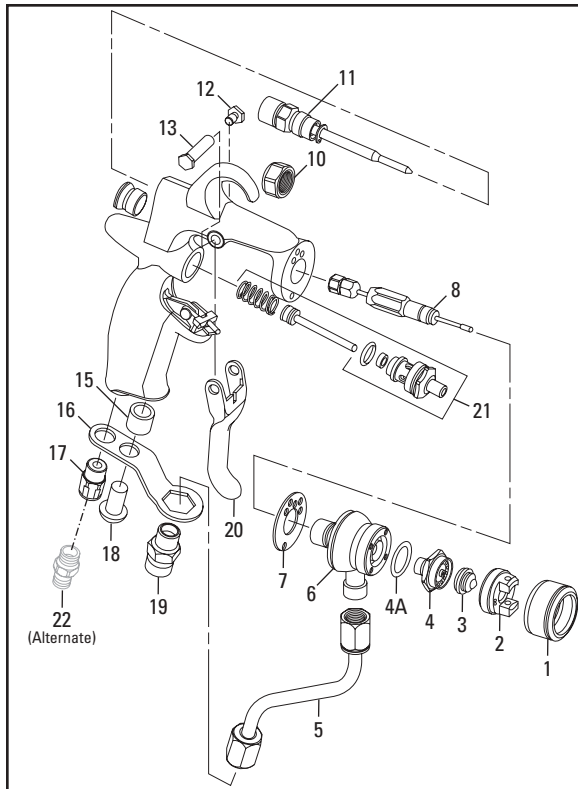
Flow rate of fluid materials through spray tip, oz./min.

\* Based on 1500 PSI with water. Actual results may vary, depending on material viscosity.

## Spray Tip Selection Charts

PART #	SIZE	FAN WIDTH	PART #	SIZE	FAN WIDTH
113-00902	.009	1" - 2"	113-01906	.019	4" - 6"
113-00904	.009	2" - 4"	113-01908	.019	6" - 8"
113-00906	.009	4" - 6"	113-01910	.019	8" - 10"
113-00908	.009	6" - 8"	113-01912	.019	10" - 12"
113-00910	.009	8" - 10"	113-01914	.019	12" - 14"
113-00912	.009	10" - 12"	113-01916	.019	14" - 16"
113-01104	.011	2" - 4"	113-01918	.019	16" - 18"
113-01106	.011	4" - 6"	113-02110	.021	8" - 10"
113-01108	.011	6" - 8"	113-02112	.021	10" - 12"
113-01110	.011	8" - 10"	113-02114	.021	12" - 14"
113-01112	.011	10" - 12"	113-02116	.021	14" - 16"
113-01114	.011	12" - 14"	113-02118	.021	16" - 18"
113-01304	.013	2" - 4"	113-02410	.024	8" - 10"
113-01306	.013	4" - 6"	113-02412	.024	10" - 12"
113-01308	.013	6" - 8"	113-02414	.024	12" - 14"
113-01310	.013	8" - 10"	113-02416	.024	14" - 16"
113-01312	.013	10" - 12"	113-02418	.024	16" - 18"
113-01314	.013	12" - 14"	113-02710	.027	8" - 10"
113-01506	.015	4" - 6"	113-02712	.027	10" - 12"
113-01508	.015	6" - 8"	113-02714	.027	12" - 14"
113-01510	.015	8" - 10"	113-02716	.027	14" - 16"
113-01512	.015	10" - 12"	113-02718	.027	16" - 18"
113-01514	.015	12" - 14"			
113-01516	.015	14" - 16"			
113-01518	.015	16" - 18"			
113-01706	.017	4" - 6"			
113-01708	.017	6" - 8"			
113-01710	.017	8" - 10"			
113-01712	.017	10" - 12"			
113-01714	.017	12" - 14"			
113-01716	.017	14" - 16"			
113-01718	.017	16" - 18"			

◆ Based on 1500 PSI with water. Actual results may vary, depending on material viscosity.



## Parts List

When ordering, please specify Part No.

ITEM NO.	PART NO.	DESCRIPTION	QTY.
1	54-4955	Air Cap Retaining Ring	1
2	54-4980	Air Cap AA2 (Standard)	1
	54-4978	Air Cap AA4 (Optional)	1
3	113-0XXXX	Carbide Tip Assembly (See Tip Selection Chart)	1
4	54-4926	Fluid Seat (UHMW Standard or Optional Carbide Fluid Seat 54-4960)	1
4A	20-6037	O-Ring	1
5	54-4906	Fluid Tube Assembly	1
6	54-4924	Gun Head	1
7	54-4923	Front Head Gasket	1
8	54-4908	Needle Packing Cartridge (1,500 PSI maximum)	1
10	54-4925	Fluid Inlet Nut	1
11	54-4977	Fan Control Assembly	1
12	54-4939	Trigger Screw	1
13	54-4938	Trigger Stud	1
15	54-4947	Fluid Tube Bracket Spacer	1
16	54-4943	Fluid Tube Bracket	1
17	54-4975	Push In Tube Fitting 1/8" NPT(m) x 3/8" O.D.	1
18	20-6718	Button Head Cap Screw	1
19	54-4944	Fluid Inlet Fitting	1
20	54-4937	Trigger	1
21	54-4909	Air Valve Assembly	1
22	71-28	D.M. Nipple 1/8" NPT(m) x 1/4" NPS(m)	1

◆ Available as part of Repair Kit 54-4970. ▲ Alternate D.M. Nipple (22) is included in gun package.

◆ Also available: 20-6037-K10 (Kit of 10 O-rings).