

Gear Meter

Continuous Bead Control

Gear meters are used to control bead dispense where application control is most critical.

Features and Benefits

Continuous bead flow means faster production cycle times since you eliminate the need to reload material typically required by shot meter systems. Fewer components (such as inlet and outlet valves and linear position sensors) result in less system maintenance

3

No speed ramp-up or ramp-down required to initiate or to stop dispensing. The unit's motor control may be interfaced to a robot controller to provide superior bead quality at varying dispense rates. Outlet pressure transducer indicates sufficient supply and outlet overpressure preventing production losses and quality problems.

System controls can be specified to be as simple as a relay panel or customized to incorporate any programmable logic controller.

Typical Applications

- Automotive glass bonding
- Headliner assembly

Typical Fluids Handled

- Urethane windshield sealants
- Structural epoxies



Gear Meter

Continuous Bead Control

Technical Specifications

Control Unit

Height 64 in. (1626 mm)
 Width 38 in. (965 mm)
 Depth 12 in. (305 mm)
 Weight 450 lbs. (204 kg)
 Electrical requirements 480 volt, 1 phase, 15 FLA

Mechanical Gear Meter

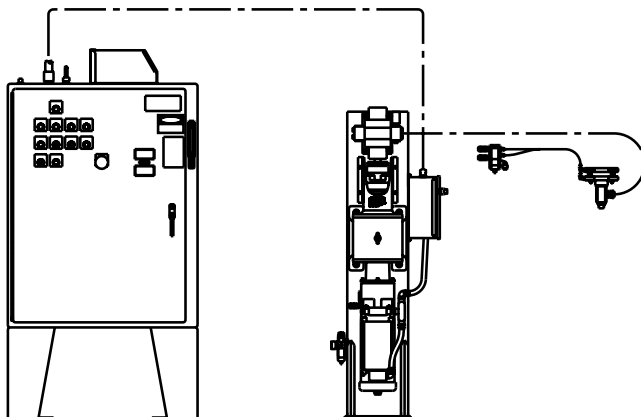
Height 59 in. (1500 mm)
 Width 26 in. (660 mm)
 Depth 23 in. (585 mm)
 Weight 550 lbs. (250 kg)
 Air pressure required 0 to 2 scfm at 60 psi
 (4.1 bar; 0.41 MPa)
 Flow rate range 0 to 90 in.³/min. (0 to 2.29 m³/min.)
 Material viscosity range 100,000 to 5,000,000 cps
 Max. fluid inlet pressure 5000 psi (345 bar; 34.5 MPa)
 Fluid inlet port 1-1/2 npt(f)

Outputs Available (120 VAC)

- Sealer Ready
- Sealer in Cycle
- Sealer Maintenance Required

Inputs Available (120 VAC)

- Robot Dispense
- 0-10 VDC Analog Signal



970176 shown

Package Ordering Information

Servo Gear Meters

Includes: servo gear meter module, main control panel, high pressure SST braid fluid dispense hose, and 3/4 npt automatic dispense valve. Supply pumps not included.

- 970175** Bottom Inlet/Outlet
- 970176** Top Inlet/Outlet
- 970177** Horizontal Inlet/Outlet
- 970194** **Horizontal Mount – Heated Components**
Includes: 4-zone temperature control panel, heated fluid hose, heated automatic dispense valve with nozzle.

Accessories

- C51172 Urethane Dispense Nozzle**
M-shaped side outlet. 3 in. (7.62 cm) length with gauge guard, 1/4 npt(f)
- C57519 Urethane Dispense Nozzle**
Triangle-shaped, 1/2 in. (1.27 cm) base x 1/2 in. (1.27 cm) height, 3 in. (7.62 cm) length, 1/4 npt (f)

